

LEVO Dealer:

Date:

Dealer reference / Client name:

LEVO AG
 Anglikerstrasse 20
 CH-5610 Wohlen
 Tel.: +41 56 618 44 11
 Fax: +41 56 618 44 10
 Office@levo.ch

Order number:

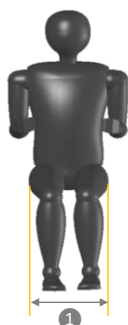
Standard configuration

60.001.7610

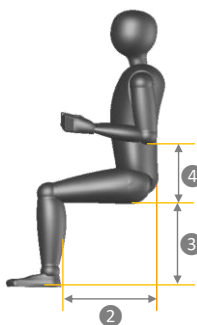
- Transport dimensions: width 62 cm (with 42 cm seat width), length 97 cm (incl. footplate), height 70 cm
- E/E Wheelchair: powered driving, sitting and standing
- Upholstered seat with fold-down backrest
- Flip-up armrests with height and angle adjustment
- Multi-directional front wheels
- Two-piece flip-up footrest
- Vehicle tie-down points
- 50 Ah Batteries and battery charger
- VR2 control system from PG Drives Technology
- Color: Black



Anthropometric Data



1



2

1 Hip width

Please check the correct box according to the measured hip width in a sitting position:

35 cm 48 cm

Seat width:

35 cm	Option
38 cm	Option
40 cm	Option
42 cm	Standard
45 cm	Option
48 cm	Option
50 cm	Option

2 Upper leg length

There are two seat frame sizes available for the LCM2: S - M and L - XL. The upper leg length determines which frame size and which armrest size to choose for the wheelchair.

Please fill in the measured upper leg length:

35 cm 62,2 cm

Example:

Upper leg length 35 cm
 - 6 cm
Seat upholstery depth 29.0 cm

Seat upholstery depth:

S-M Frame	29.0 cm	Option
	31.2 cm	Option
	33.4 cm	Option
	35.6 cm	Option
	37.8 cm	Option
L-XL Frame	40.0 cm	Option
	43.0 cm	Option
	45.2 cm	Option
	47.4 cm	Option
	49.6 cm	Option
	51.8 cm	Option
	54.0 cm	Option

3 Lower leg length

The lower leg length determines the footrest position and the seat height (SH) of the wheelchair. The seat height determines the wheel size and with that the total height of the wheelchair.

Please fill in the measured lower leg length:

36 cm 50 cm

Please check the desired seat height and footrest position, under consideration of the seat cushion thickness.

Example:

Lower leg length 51 cm
 Seat cushion height - 3 cm
Footrest position 48 cm

Footrest position:

SH 53	36 cm	Option
	38 cm	Option
	40 cm	Option
	42 cm	Option
	44 cm	Option
	46 cm	Option
	48 cm	Option
SH 54,5	50 cm	Option
	52 cm	Option
SH 56	54 cm	Option
	56 cm	Option

Now you may choose between the three seat heights

* Only possible with Easy Transfer Footplate

4 Elbow height

Standard armrest height is 20 cm

17 cm 26 cm

Please measure the anthropometric data as shown. If possible, the user should be in a sitting position and wearing shoes.

Joystick position



VR2 Control system: - Standard control system - 90 A Power module	- Controls lights - Programmable	<input type="checkbox"/>	Standard	●
① R-Net control system "Standard": - Color LCD Joystickmodule - 120 A Power module - Max. 6 actuators, multiple axes	- Controls lights - Fully programmable, multiple profiles - Expandable	<input type="checkbox"/>	60.076.0010	
② R-Net control system "XL", as R-net control system "Standard" with the extras : - 3.5" VGA color display - Loudspeaker instead of a buzzer for a louder horn	- Metal case - Paddle switches for on/off, profile/mode and speed	<input type="checkbox"/>	60.076.0020	
② R-Net control system "XL", with integrated bluetooth		<input type="checkbox"/>	60.076.0030	

Armrest



		<input type="checkbox"/>	Standard	●
		<input type="checkbox"/>	Option	
① Swing-away, offers more space for transfers and allows to drive closer to tables		<input type="checkbox"/>	60.005.6810	
② Joystick protection guard, shock protection for joystick, protects the users hands		<input type="checkbox"/>	60.012.6860	

Attendant Controls



VR2 Attendant control	<input type="checkbox"/>	32.072.0140
R-Net Attendant control	<input type="checkbox"/>	32.068.1850

For special controls, see our special controls order form.

Speed

6 km/h	<input type="checkbox"/>	Option
8 km/h	<input type="checkbox"/>	Option
10 km/h	<input type="checkbox"/>	Standard

Mudguards and battery cover color

Black-finished plastic without paint		<input type="checkbox"/>	Standard	●
Red	RAL 3020	<input type="checkbox"/>	60.008.0010	
Yellow	RAL 1018	<input type="checkbox"/>	60.008.0010	
Blue	RAL 5002	<input type="checkbox"/>	60.008.0010	
Black	RAL 9017	<input type="checkbox"/>	60.008.0010	
Traffic white	RAL 9016	<input type="checkbox"/>	60.008.0010	
Other RAL Classic color	RAL: _____	<input type="checkbox"/>	60.008.0010	
Blue metallic	RAL 5000-M	<input type="checkbox"/>	60.008.0020	
Red metallic	RAL 3002-M	<input type="checkbox"/>	60.008.0020	
Silver metallic	RAL 9007	<input type="checkbox"/>	60.008.0020	
Orange reflex	RAL 2011-R	<input type="checkbox"/>	60.008.0030	
Lemon reflex	RAL 6018-R	<input type="checkbox"/>	60.008.0030	
Silver reflex	RAL 9007-R	<input type="checkbox"/>	60.008.0030	

Frame color

Black	RAL 9017	<input type="checkbox"/>	Standard	●
-------	-----------------	--------------------------	----------	---

Backrest

Standard sling backrest height	31 cm	<input type="checkbox"/>	Standard	●
	33 cm	<input type="checkbox"/>	Option	
	35 cm	<input type="checkbox"/>	Option	
	37 cm	<input type="checkbox"/>	Option	
	39 cm	<input type="checkbox"/>	Option	
	41 cm	<input type="checkbox"/>	Option	
V-Trak Axxis reduced height backrest, height 31 cm	<input type="checkbox"/>	60.009.0070		
V-Trak Axxis low backrest, height 40 cm	<input type="checkbox"/>	60.009.0050		
V-Trak Axxis high backrest, height 61 cm	<input type="checkbox"/>	60.009.0060		
Without backrest, be aware net price is lower after discount	<input type="checkbox"/>	60.109.6810		

Backrest options

Backrest extension 15 cm, for standard backrest

Seat width ► Height ▼	35	38	40	42	45	48	50
15 cm	32.064.1735	32.064.1738	32.064.1740	32.064.1742	32.064.1745	32.065.1748	32.065.1750

Seat cushion with memory foam depending on the seat depth and seat width



Seat width▶ Seat depth▼	35	38	40	42	45	48	50
S	30.100.3740	30.100.3770	30.100.3780	30.100.3790	30.100.3800	30.100.3802	30.100.3803
M	30.100.3822	30.100.3820	30.100.3830	30.100.3840	30.100.3850	30.100.3855	30.100.3856
L	30.100.3857	30.100.3860	30.100.3870	30.100.3880	30.100.3890	30.100.3900	30.100.3902
XL	30.100.3907	30.100.3910	30.100.3920	30.100.3930	30.100.3940	30.100.3950	30.100.3956

Additional seat cushion cover

Seat width▶ Seat depth▼	35	38	40	42	45	48	50
S	30.100.3741	30.100.3771	30.100.3781	30.100.3791	30.100.3801	30.100.3804	30.100.3805
M	30.100.3823	30.100.3821	30.100.3831	30.100.3841	30.100.3851	30.100.3854	30.100.3953
L	30.100.3858	30.100.3861	30.100.3871	30.100.3881	30.100.3891	30.100.3901	30.100.3903
XL	30.100.3908	30.100.3911	30.100.3921	30.100.3931	30.100.3941	30.100.3951	30.100.3957

Urin proof seat cushion cover

Seat width▶ Seat depth▼	35	38	40	42	45	48	50
S	30.100.3743	on request	on request	on request	on request	on request	on request
M	30.100.3824	30.100.3864	on request	on request	on request	on request	on request
L	on request	30.100.3863	30.100.3873	on request	30.100.3892	on request	on request
XL	on request	on request	on request	on request	on request	on request	on request

Headrest



V-Trak headrest standard, *only in combination with V-Trak Axxis backrest*
 V-Trak headrest winged, *only in combination with V-Trak Axxis backrest*
 Track extension for V-Trak head support, for V-Trak 60 and 80 cm

	02.067.116
	02.067.117
	02.009.0028

Lateral supports and hardware



V-Trak lateral support, pad and cover

Medium Right	32.068.0030
Medium Left	32.068.0040
Large Right	32.068.0010
Large Left	32.068.0020

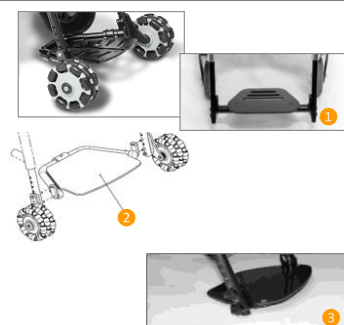
Knee support



- Standard knee support
- ① Rectangular knee wedge
- ② Conical knee wedge, *gives more support, in particular with spasticity*
- ③ Sports knee support
- ④ Rigid knee support

	Standard	●
50x100	Option	
60x100	Option	
80x100	Option	
50x150	Option	
80x150	Option	
50-100x100	60.011.0020	
90-140x100	60.011.0020	
130-180x100	60.011.0020	
	60.011.0050	
	On request	

Footrest



- Two-piece flip-up footrest
- ① One piece footrest, fixed
- ② One piece footrest, flip-up backwards, *not in combination with footrest height adapter*
- ③ Easy transfer foot plate, *foot plate is closer to the floor which makes transfers easier*
- Non-slip footrest surface

	Standard	●
	Option	
	60.003.0050	
20 cm	60.003.0120	
26 cm	60.003.0130	
	60.003.0040	

Footrest



④ Footrest height adapter, *for users with short lower leg length, set*

For seat width 35, smallest position 26 cm
For seat width 38, 45 and 48 cm, smallest position 30 cm*
For seat width 40 and 42 cm, smallest position 30 cm**

	60.003.0085
	60.003.0070
	60.003.0080

**Footrest will be 3 cm narrower than the seat width.
 **Footrest will be 2 cm narrower than the seat width.*

Foot plate angle

Foot plate is adjustable in all three angles.

80°		Option	
90°		Standard	●
100°		Option	

Wheel options



① Block-profile drive wheels (black) with matching mid-wheel castors
 V-profile drive wheels (black) with matching mid-wheel castors

	Standard	●
	Option	

Puncture proof tires on drive wheels
 Air tires on drive wheels

	Standard	●
	Option	

Lights



Lights and indicators for outdoor use

	60.076.0100
--	-------------

Accessories



① Swing-away table tray, *can only be mounted on the opposite side of the joystick position*

32-40	42-52
32.068.1061	32.068.1062

Right	
Left	

② Push handles standard
 ③ Push handles 7 cm extended
 ④ Push handles quick release height adjustable

Pair		60.013.0010
Pair		60.013.0020
Pair		60.013.0030

⑤ Skirt guard

S - M	Right		32.076.0050
	Left		32.076.0050
L - XL	Right		32.076.0051
	Left		32.076.0051

⑥ Upper leg support

Right		32.070.0581
Left		32.070.0582

⑦ Chest roll

35	38	40	42	45	48	50
32.076.0061	32.076.0062	32.076.0063	32.076.0064	32.076.0065	32.076.0066	32.076.0067

Accessories



⑧ Foot guide

small	Right		32.069.95
	Left		32.069.96
large	Right		32.070.0040
	Left		32.070.0041

⑨ Seat depth and footrest quick adjustment kit, *10 clamps with bolt, 4 screws*

	60.004.0020
--	-------------

⑩ Knee support height adapter, standard
 Knee support height adapter, for Sports Knee Support

Pair		60.013.0040
Pair		60.013.0050

For users with long lower leg lengths, knee holder gets closer to the joint.

⑪ Rearview mirror

Right		32.068.0120
Left		32.068.0120

⑫ Anti-tip rolls

Pair		60.013.0090
-------------	--	-------------

