

Kid: UDI-DI 0761304541

Junior: UDI-DI 0761304551

Dealer 2025

LEVO Dealer:

Date:

Dealer reference / Client name:

LEVO AG
 Anglikerstrasse 20
 CH-5610 Wohlen
 Tel.: +41 56 618 44 11
 Fax: +41 56 618 44 10
 Office@levo.ch

Order number:

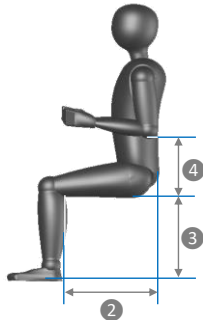
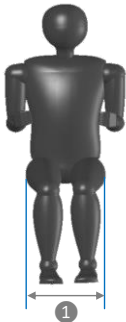
Standard configuration

60.001.6601

- Transport dimensions: width 45 cm, length 62 cm, height 43 cm (incl. footplate)
- M/E Wheelchair: Manual driving, seating and powered standing
- Seat plate and backrest upholstery
- Flip-up armrests
- Armrests height and angle adjustable
- Armrests round with built-in control switch
- Fold down backrest
- Standard colors: black, white, red, yellow, blue, wine red, basalt grey, white aluminum
- One-piece fixed footrest
- Pneumatic rear wheels and pump
- Batteries and battery charger
- Chest strap and knee support with wedge



Anthropometric Data



1 Hip width

Please fill in the correct box according to the measured hip width in a sitting position:

30 cm 35 cm

Seat width:

30 cm	<input type="checkbox"/>	Option
35 cm	<input type="checkbox"/>	Option

2 Upper leg length

There are two seat frame sizes available for the Kid & Junior: XS and S. The upper leg length determines which frame size and which armrest size to choose for the wheelchair.

Please fill in the measured upper leg length:

28 cm 45 cm

Example:

Upper leg length 28 cm
 - 4 cm
Seat upholstery depth 24.0 cm

Seat upholstery depth:

XS	24.0 cm	<input type="checkbox"/>	Option
	26.0 cm	<input type="checkbox"/>	Option
S	28.5 cm	<input type="checkbox"/>	Option
	30.5 cm	<input type="checkbox"/>	Option
	33.0 cm	<input type="checkbox"/>	Option
	35.0 cm	<input type="checkbox"/>	Option

3 Lower leg length

The lower leg length determines the footrest position and the seat height of the wheelchair. The seat height determines the wheel size and with that the total height of the wheelchair.

Please fill in the measured lower leg length:

19 cm 41 cm

Please check the desired seat height and footrest position, under consideration of the seat cushion thickness.

Example:

Lower leg length 36 cm
 Seat cushion height - 2.5 cm
Footrest position 33.5 cm

Footrest position:

Kid 33 with adapter	19.2 cm	<input type="checkbox"/>	Option
	21.0 cm	<input type="checkbox"/>	Option
	22.8 cm	<input type="checkbox"/>	Option
Junior w/o adapter	24.6 cm	<input type="checkbox"/>	Option
	26.4 cm	<input type="checkbox"/>	Option
Junior 40 with adapter	28.2 cm	<input type="checkbox"/>	Option
	30.0 cm	<input type="checkbox"/>	Option
Junior 44 w/o adapter	31.8 cm	<input type="checkbox"/>	Option
	33.6 cm	<input type="checkbox"/>	Option
Junior 44 with adapter	35.4 cm	<input type="checkbox"/>	Option
	35.2 cm	<input type="checkbox"/>	Option
	39.0 cm	<input type="checkbox"/>	Option
	40.8 cm	<input type="checkbox"/>	Option

Now you may choose between seat height 33, 40 or 44 cm.

Footrest adapter for short legs (Junior)

60.003.6610

4 Elbow height

Standard armrest height is 16 cm

10 cm 22 cm

Please measure the anthropometric data as shown. If possible, the user should be in a sitting position and wearing shoes.

Wheels and position

Seat height: *floor to seat height in the front, measured without seat cushion*

Rear wheel 16", castor 3"
 Rear wheel 20", castor 5"
 Rear wheel 22", castor 5"

Kid: 33 (30) cm	Option
Junior: 40 (37) cm	Option
Junior: 44 (41) cm	Option

Stand-up operation



Right	Standard	<input checked="" type="radio"/>
Left	Option	<input type="radio"/>

Control options

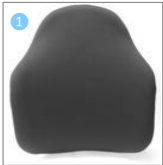


① Hand control	60.005.0040
② Dual switch for table tray control, <i>table tray not included</i>	60.007.0010

Frame color

Black	RAL 9017	Standard	<input checked="" type="radio"/>
White	RAL 9016	Option	<input type="radio"/>
Red	RAL 3020	Option	<input type="radio"/>
Yellow	RAL 1018	Option	<input type="radio"/>
Blue	RAL 5002	Option	<input type="radio"/>
Wine red	RAL 3005	Option	<input type="radio"/>
Basalt grey	RAL 7012	Option	<input type="radio"/>
White Aluminum	RAL 9006	Option	<input type="radio"/>
Blue metallic	RAL 5000-M	60.008.0020	<input type="radio"/>
Red metallic	RAL 3002-M	60.008.0020	<input type="radio"/>
Silver metallic	RAL 9007	60.008.0020	<input type="radio"/>
Orange reflex	RAL 2011-R	60.008.0030	<input type="radio"/>
Lemon reflex	RAL 6018-R	60.008.0030	<input type="radio"/>
Silber reflex	RAL 9007-R	60.008.0030	<input type="radio"/>
Other RAL color	RAL: _____	60.008.0010	<input type="radio"/>

Backrest



Standard sling backrest height 24 cm	Height: _____	Standard	<input checked="" type="radio"/>
Backrest extension 15 cm, <i>for backrest height 30 cm the extension must be added</i>		32.066.0410	<input type="radio"/>
① V-Trak Axxis reduced height backrest, height 31 cm		60.009.0070	<input type="radio"/>
V-Trak Axxis low backrest, height 40 cm		60.009.0050	<input type="radio"/>
Without backrest, <i>be aware net price is lower after discount</i>		60.109.6810	<input type="radio"/>

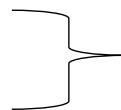
Backrest angle

85°	Option	<input type="radio"/>
90°	Standard	<input checked="" type="radio"/>
95°	Option	<input type="radio"/>

Seat cushion *with memory foam depending on the seat depth and seat width*

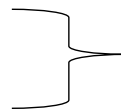


Seat width ▶	30	35
Seat depth ▼		
XS	30.100.3760	30.100.0610
S	30.100.0660	30.100.3740



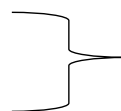
Seat cushion cover

Seat width ▶	30	35
Seat depth ▼		
XS	30.100.3761	30.100.0611
S	30.100.0661	30.100.3741



Urin proof seat cushion cover

Seat width ▶	30	35
Seat depth ▼		
XS	on request	on request
S	30.100.0663	30.100.3743



Headrest



① V-Trak headrest standard, <i>only in combination with V-Trak Axxis backrest</i>	02.067.116
② V-Trak headrest winged, <i>only in combination with V-Trak Axxis backrest</i>	02.067.117

Lateral supports and hardware



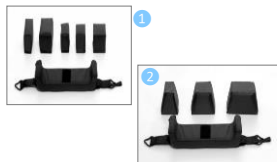
V-Trak lateral support, pad and cover

Medium	Right		32.068.0030
Medium	Left		32.068.0040

V-Trak lateral support, pad and cover

Large	Right		32.068.0010
Large	Left		32.068.0020

Knee support



① Rectangular knee wedge

50x100			Option
60x100			Option
50x150			Option

② Conical knee wedge, *gives more support, in particular with spasticity*

50-100x100			60.011.0020
90-140x100			60.011.0020
130-180x100			60.011.0020

Foot plate

Foot plate angle

70°			Option
80°			Option
90°			Standard
100°			Option
110°			Option

Non-slip footrest surface

			60.003.0040
--	--	--	-------------

Wheel options



① Spinegy wheels, *only for 22" wheels*

Red			60.002.0015
Black			60.002.0015
White			60.002.0015

② Maxgrepp original hand ring, with rubber cover, *only for 22" wheels*

			60.002.0060
--	--	--	-------------

③ Maxgrepp Ergo Para CP hand ring, *only for 22" wheels*

			60.002.0050
--	--	--	-------------

Accessories

① Table tray

			32.070.0157
--	--	--	-------------

② Folding down stroller bar, *width adjustable*

			02.069.0030
--	--	--	-------------

③ Anti-tip for Kid

Right			32.066.0420
Left			32.066.0420

③ Anti-tip for Junior

Right			32.066.0430
Left			32.066.0430

④ Spoke guard transparent

Paar	20"		2 x 02.066.1013
-------------	------------	--	--------------------

Paar	22"		2 x 02.066.1014
-------------	------------	--	--------------------

⑤ Backpack

Red			30.100.0841
Yellow			30.100.0842
Blue			30.100.0843
Black			30.100.0844

⑥ Foot guide

Right			32.069.95
Left			32.069.96

⑦ Brake lever extension (6 cm)

Right			30.100.5030
Left			30.100.5030

⑧ Knee support height adapter, *for users with long lower leg lengths, knee holder gets closer to the joint*

Pair			2 x 32.069.85
-------------	--	--	------------------

⑨ Control switch extension

Vertical			32.066.0450
Horizontal			32.070.0156

⑩ Quick adjustment for seat depth / footrest (set)
Quick adjustment for seat depth (set)

			60.004.0020
			60.004.0030

